

Target Performance Report - S1.5

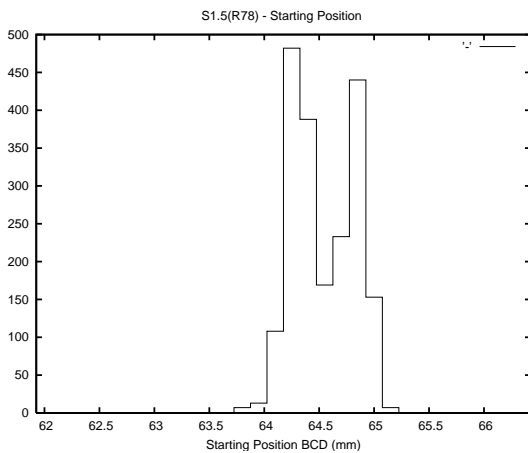
Report Generated: January 26, 2014,

Last Actuation: 26/01/14 11:14:00

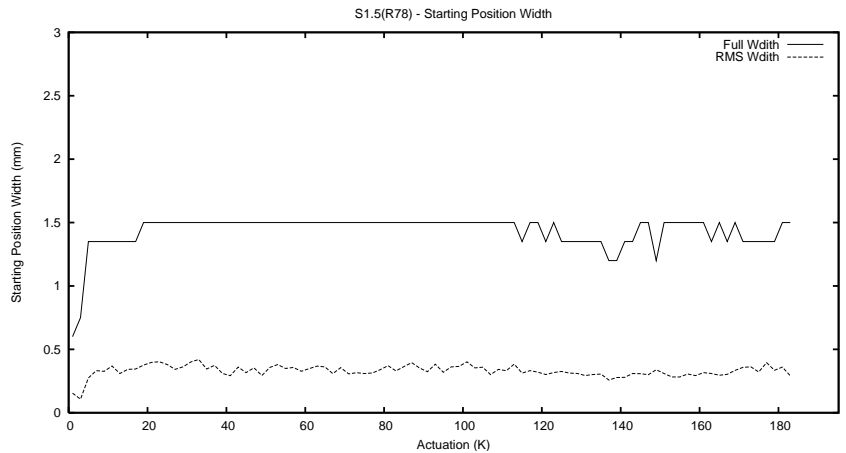
1 Operation Summary

	Last Shift	Total
Actuations:	58.4K	186.0K
Quadrature Count errors:	14	18
Fiber ADC errors:	0	0
BPS errors (during actuation):	0	0
(R78) Gaps > 3s & < 10s:	15	175
(R78) Gaps > 10s:	4	44
(R78) SP2 Corrections:	27	425
(R78) Capture Over/Under shoots:	297/391	4017/3415

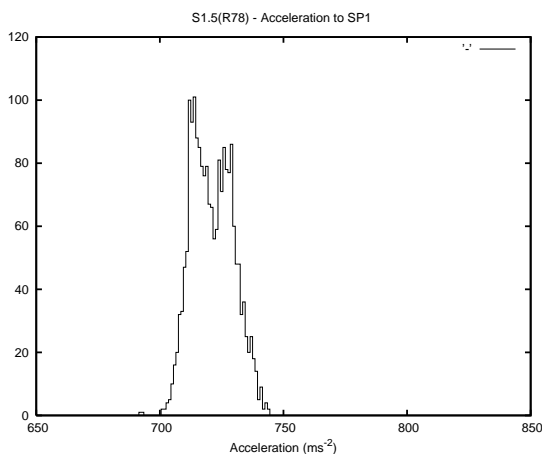
2 Mechanical Performance



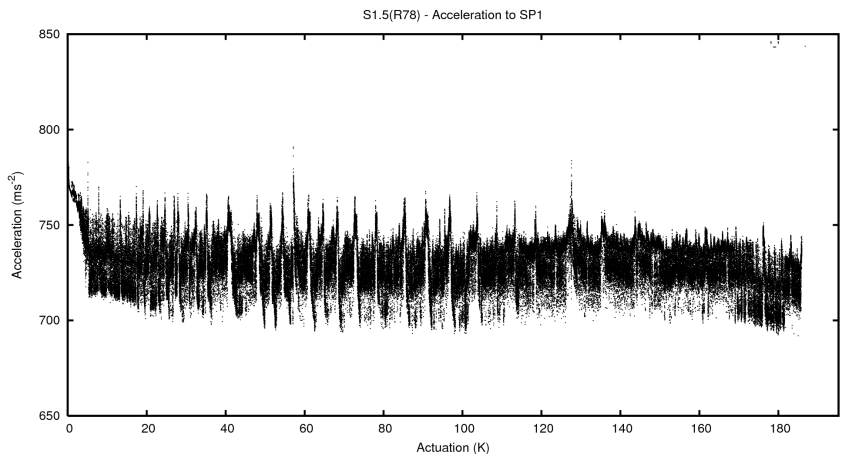
Starting position for the last 2000 actuations.



Starting position width over time.

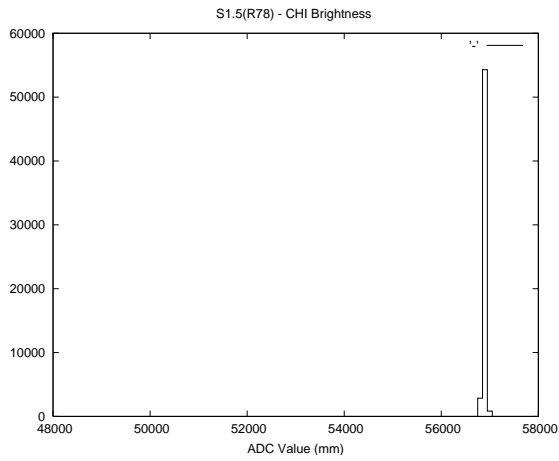
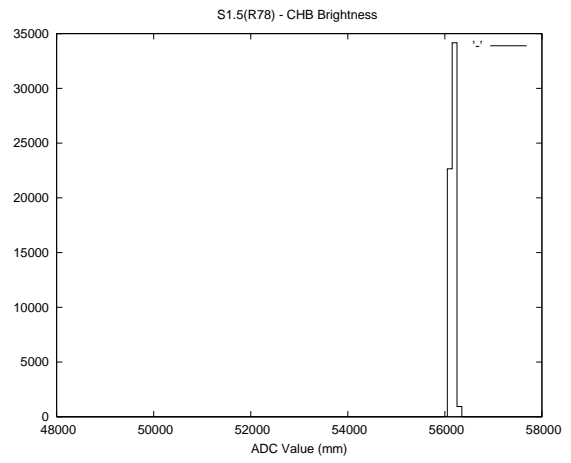
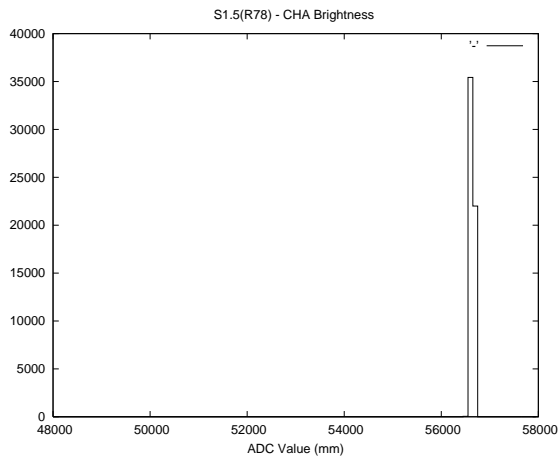


Acceleration for the last 2000 actuations.



Acceleration over time. Normalised to a temperature 45C using the temperature data collected by the system.

3 Optical Performance



4 BPS Check

